

CCTR-811 Vehicle GPS Tracker

Welcome to use Real Time GPS tracker CCTR-811, This product is with u-Blox GPS module and GSM module, it can upload current location to website, display history tracking on website, it has Google map link locate function without platform, it is very easy to install and using, just connect the power supply is OK, the tracker can auto download & configure APN & GPRS setting, and the software can be upgraded by GPRS, also it built in shock sensor to control power saving, shock & move alarm, rechargeable battery 300MAH for power down alarm, over area alarm, over speed alarm, etc.

With GPS and GSM, the tracker sends the present location information through GPRS to internet server, so that user visit the website www.999gps.net with the applied user's name and password (Last 7 digitals of the ID) through any computer with available internet, current location checking, history tracking playing back, alarm & running report etc can be operated, it is used for alarm, fleet management, anti-hijack etc.

User can download Android or iPhone iOS app software to android or iPhone mobile phone, click the app, logon with user name and password, you can locate current location & display history tracking, the user name and password is same with the website login. Also following 999GPS official account on WeChat software, map or text description location can be send back by WeChat. Basically using mobile phone send SMS or call the tracker can get the SMS of the current location Google map link.

This GPS tracker can be used as car alarm, fleet management, driver management etc, it can be used for tracking cars, company vehicles, buses, taxis, trucks, etc.



[QR-Manual Download \(Word\)](#)



[QR-Manual Download \(Pdf\)](#)



[iPhone App Download](#)



[Android App Download](#)



[Wechat Official Account](#)

Parts List & Description

CCTR-811



Main Unit

Connect to GPS connector on main unit



Connect to GSM connector on main unit



External Microphone



External SOS button
White: Grey wire on 5P
Black: GND or Car body



5P Wire:
Red or Brown: 12–32V
Black: GND or car body
Yellow: Immobilizer
Grey: SOS button
Green: ON/ACC

Specification

- Easy installation, 2-5 wires;
- Auto download & config APN & GPRS setting;
- Tracker SIM card balance checking by SMS;
- App (Android & iPhone) / WeChat / Web / SMS / Wap locate;
- Built in backup battery for power down alarm;
- Built in Shock Sensor for Car Move and Shock Alarm;
- Shock sensor control uploading to save car battery power;
- Online Air Upgrade From Internet Server by GPRS;
- Cell ID locate when no GPS (Indoor or underground);
- u-Blox GPS module A-GPS fast locate;
- Universal 4 GSM Band for Global & wide working voltage: 9-45V DC;

LED indicator

GREEN LED Flash once	: GSM & GPS working well
GREEN LED Flash twice	: GSM working well and no GPS signal
GREEN LED Flash three times	: GSM & GPS working well but battery low
GREEN LED Flash four times	: GSM working well, battery low and no GPS signal
GREEN LED ON continuously	: GSM searching network
GREEN LED OFF continuously	: Power off
GREEN LED Flash fast	: incoming a call or making a call
RED LED Flash once	: uploading current tracking
RED LED Flash twice	: can not upload tracking now
RED LED Flash slowly	: the tracker is being charged

Before Using

1. Power ON / OFF

- ◆ When power is OFF, install the battery in or connect the power wire to 12V or 24V, the tracker will power on automatically.
- ◆ When the battery voltage in the tracker is too low, the tracker will power off automatically.

2. Install SIM card

Press the yellow switch button on one side of the tracker main unit with a tool, the SIM card holder will come out. Pull it out and put the SIM card in the holder and then push the holder into the tracker again (Pay attention: the SIM card metal contact pin can not face down to the holder, please see the picture) , if the SIM card is not installed properly, the green LED on the tracker will keep ON, an the tracker can not work properly.

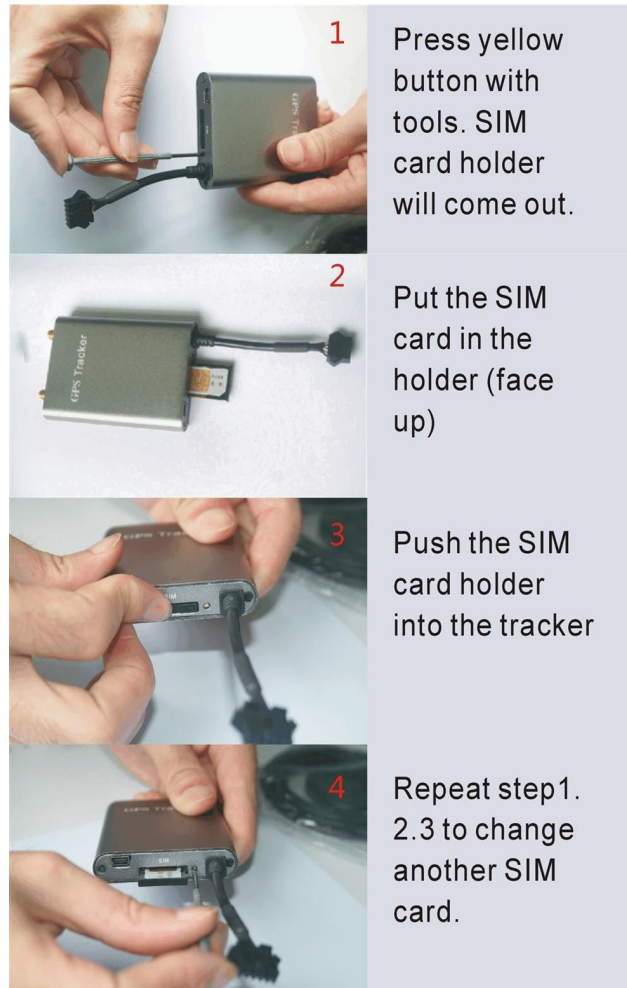
1> This tracker use 2G GSM network, and it upload tracking only through GPRS, it can not work in CDMA network or 3G(WCDMA or CDMA2000) network. (Many 3G SIM card can use 2G GSM

network, this SIM card can use in this tracker).

2> Enable the SIM card GPRS service, order a GPRS data package (20-30M/month) can save data charge (Normally the tracker will use about 20M GPRS data every month)

3> Please confirm the PIN code of the SIM card is disabled.

4> Before installing or uninstalling the SIM card, please power off the tracker.



3. Recharge and power supply

- ◆ The tracker only uses the 9-45V DC power supply, too high voltage or AC voltage may damage the tracker or even cause accidents, it is necessary connecting to car battery all the time, after the backup battery is full, the built in recharging circuit will stop recharging, and if the tracker is not move, the tracker will go to sleep, then the tracker will cost few power and will not make the car battery can not start car engine.

RED or BROWN-----12V/24V car battery

BALCK-----GND (Car Body)

YELLOW----Cut Relay Driving (Immobilizer Control)

GREY-----External SOS button

GREEN-----ON/ACC signal (if not connect, the uploading will controlled by shock sensor)



4. Reset to default Configuration (Factory configuration)

Send SMS "FACTORY*123456" to the tracker, the tracker will repower on and reset all the configuration to default.

Notes: After reset to default set, all IP / APN / GPRS / TIME ZONE setting are deleted and back to default, all preset phone number are deleted and password change to 123456, all the alarm setting is canceled, if you changed these before, then after reset the tracker, you need set these again by sending SMS.

5. ANTENNA

- ◆ The Antenna of GSM and GPS are external , when install the antenna, please confirm the system can work well.
- ◆ Please leave the tracker away from big metal, this will reduce the GSM and GPS signal, and the GPS antenna need face to the heaven.

6. Shock Sensor and ON/ACC signal Control GPS ON/OFF and Power Saving

This tracker built in shock sensor, default is SHOCKCONTROL mode, when the tracker begin to move, the tracker will turn on GPS and upload location automatically, after the tracker stop moving 10 minutes, the tracker will turn off GPS & GPRS automatically (Stop uploading location), this can make the battery life longer and save GPRS data charge.

Also the uploading tracking can be controlled by ON /ACC signal, when the ON / ACC signal is high, the tracker will turn on GPS and upload location automatically, when the ON / ACC signal is low, the tracker will turn off GPS & GPRS automatically (Stop uploading location), if this signal wire is open and not connect to any signal , the uploading tracking is controlled by shock sensor.

7. Using Condition

The working temperature is -20 °C to 60 °C, over this range the specification maybe can not reach the standard level, the storage temperature can reach to -40 °C to 80 °C.

How to Install

1. First to buy a 2G GSM phone SIM card, which needs SMS service and incoming caller ID display and GPRS function, and please disable the PIN code of the SIM card, this SIM card phone number is the tracker number and all the operations (calling and sending SMS) to the tracker is this number.
2. After install the SIM card to tracker, connect the tracker RED & BALCK wire to the car battery,

the tracker will power on automatically (When the battery power used out, recharging the backup battery maybe delay the first locating 5-30 minutes)..

3. After the tracker power on, the tracker uploading is controlled by shock sensor, if the tracker begin to move, the tracker begin upload the tracking, the tracker status on the platform will change to online immediately. if the tracker stop moving, the tracker will stop upload the tracking and turn off GPS & GPRS to go to sleep, a few minutes later the tracker status on the platform also will change to offline. If you like to keep the tracker always online, send SMS (keeponline*123456) to change the tracker working method is OK, but this will exhaust more data charge and car battery power, and if the car will park long time or the car battery is old, this maybe cause the car battery power low and can not start car engine.

How to use

1. After install the SIM card and power on the tracker, the tracker will auto download APN & GPRS setting according the different SIM card, the setting can be check by sending SMS "CHECK*123456" to the tracker, if the auto setting is not right, user can Send SMS to tracker to set APN name and GPRS user name & password first (the detail SMS command please refer the following description, and call the tracker SIM card phone company to confirm the APN & GPRS user name & password).

2. Please confirm the tracker can receive the GPS signal and GSM signal (you should in the outdoor to get GPS signal, Green LED will flash once or third times every 4 seconds means GSM and GPS signal well), when the tracker begin to move or the ON / ACC signal is enabled, the tracker will upload the location to the platform: www.999gps.net .

3. Platform user name and password is the last 7 digital number of the tracker's ID or S/N number, the ID or S/N number is print on the back of the device, also user can send SMS "ID*123456" (123456 is the tracker default password) to the tracker to check the ID number, user can change the password and user information, our administrator can change the user name by user request (ask your dealer to contact us), User login the website can see the current location on the Google map, also user can display the history tracking in the specified date and time and other operation.

4. Also user use iPhone or Android GPStrack App and WeChat App can check and locate the tracker, the App use the same login user name and password, the App and Wechat downloading & using guide please refer the 999GPS.net platform manual.

5. User call the tracker or send SMS to tracker also can trigger the tracker to send back the location in text description or google map website link by SMS (Send LOCATE*123456 or URL*123456 to tracker).

6. If you have several trackers, fleet management user can be created by us, the user can see all the trackers after login, this can be used as fleet management, ask your dealer to contact us to get your fleet management user name and password.

7. The data & time of the tracker upload to the website is GMT time (Greenwich Mean Time, add or minus a fixed digit is your local time), you can change the display time to your local time by setting the time zone to your local time zone in the menu of My Account after logon the platform (For example Newyork time zone is -05), please refer the platform operation guide.

Setting Instruction

1. Check Tracker ID:

The tracker ID is print on the label of the tracker, the S/N number on the label is the ID, Also if the label is missing, send SMS "ID*123456" to tracker, in which, "ID" is the fixed command and "123456" is the password. Having successfully been made, there will be a SMS "ID: CC8301412345678", in which, "CC8111412345678" is the ID and every tracker corresponds to the only number. This number is used to differ the tracking uploaded to the website from others. the last 7 digital number of the tracker ID is the user name and password of the tracker on the platform, for example the tracker ID is : CC8111412345678, and then the user name on the platform of this tracker is : 2345678, and the platform password for this user name also is :2345678,user can login the platform to change the password.

2. Set Server IP

Send SMS "IP*123456*58.64.155.133,8011" to the tracker, in which, "IP" is the fixed command, "123456" is the password and "58.64.155.133,8011" is the IP address of the server computer of our website. Having successfully been set, there will be a SMS "IP: 58.64.155.133,8011". However, the IP address may be changed with the upgrade of our server, so please see to the notices on our website.

Notice: The tracker IP address has been set to default : 58.64.155.133,8011 in factory, it is not necessary to set again, unless our IP address has been changed or user need upload the location to other server, If our server IP is changed, we will notice on the website.

3. Set APN

This tracker can download & configure APN & GPRS username password automatically after power on, if the APN & GPRS user name password are not right, then you need sending SMS to tracker to change them, if the tracker can not upload location to platform (Red LED flash twice), please confirm the auto configuration of APN & GPRS user name password is right, the APN name and GPRS user name & password please call your tracker SIM card mobile phone company to confirm, the auto configuration APN & GPRS of the tracker please sending SMS "CHECK*123456" to tracker to check.

Send SMS "APN*123456*apnname" to the tracker, in which, "APN" is the fixed command, "123456" is the password and "apnname" is the APN name of a mobile phone company. Having successfully been made, there will be a SMS "APN: apnname".

Send SMS "USERNAME*123456*username*password" to the tracker, "USERNAME" is a command, "123456" is the password of the tracker; "username" is the mobile company GPRS user name, "password" is the mobile company GPRS password, if the operation is success, the tracker will send back the information "Username:username, Password:password", if the password is not right, the operation is fault, the tracker will send back information "Wrong Password".

4. Tracker SIM Card Money or Data Balance Checking

Most SIM card can send a SMS or call a specified USSD command number to get a SMS with SIM card money or data balance, for example PCCW mobile phone SIM card, call ##121#, Union mobile phone send SMS CXYE to 10010, the mobile phone company will send back the SMS with money & data balance. for this kind of SIM card , after set by the following step, sending SMS to tracker can check the tacker SIM card money or data balance.

Set sending SMS or call USSD number to check balance:

Send SMS "BALANCEMODE*123456*SMS" to the tracker, it means sending SMS to check balance, in which, "BALANCEMODE" is the fixed command, "123456" is the password and "SMS" means sending SMS. Having successfully been made, there will be a SMS "Balance Mode: SMS".

Send SMS "BALANCEMODE*123456*CALL" to the tracker, it means calling USSD command number to check balance, in which, "BALANCEMODE" is the fixed command, "123456" is the password and "CALL" means calling USSD number. Having successfully been made, there will be a SMS "Balance Mode: CALL".

Set sending SMS number or call USSD number:

Send SMS "BALANCEPHONE*123456*NUMBER" to the tracker, in which, "BALANCEPHONE" is the fixed command, "123456" is the password, "NUMBER" is phone number or USSD command

number, for example : PCCW is calling ##121# to trigger replying SMS with balance, then the NUMBER is ##121#, Union mobile phone is sending CXYE to 10010 to trigger replying SMS with balance, then the NUMBER is 10010. Having successfully been made, there will be a SMS "Balance Phone: ##121#" or "Balance Phone: 10010" .

Set sending SMS content:

If the balance checking is sending SMS, then you need set the sending SMS content, if the balance checking is calling USSD number, then it is not necessary to set this. Send SMS "BALANCESMS*123456*sms" to the tracker, in which, "BALANCESMS" is the fixed command, "123456" is the password, "sms" is the sending SMS content to check balance, for example: Union mobile phone is sending CXYE to 10010 to trigger replying SMS with balance, then the sms is CXYE. Having successfully been made, the tracker will reply SMS "Balance SMS: CXYE" .

Trigger to Check Balance:

After finish the above setting, send SMS "BALANCE*123456" to the tracker, in which, "BALANCE" is the fixed command, "123456" is the password, the tracker will check the balance and reply SMS with balance to sender, every mobile phone company reply SMS is different.

If the authorized number have been set, use the authorized phone number to send SMS "BALANCE#" to the tracker also can trigger the tracker to check balance.

Notice: After finish the above setting, it is not necessary to set again unless the tracker SIM card company changed or the tracker setting is changed to factory, later every time just sending SMS "BALANCE#" or "BALANCE*123456" can trigger tracker to check balance.

5. Add / Delete / Check Authorized Number:

The authorized phone number is used to send alarm information by SMS, or use mobile phone to locate the tracker without platform, if the authorized phone number is not set, then the alarm information can not send to user by SMS (alarm information, battery low, SOS, etc).

5.1. Add authorized phone number by SMS

Send SMS"ADDPHONE*123456*A*number"(Not including the quotation marks " ", Number means the telephone number you want authorized, the following is same) to tracker is OK, "ADDPHONE" is a command; "123456" is password; "A" is authorized number location, every tracker have 3 authorized phone number, A and B, and C, so you can set 3 phone numbers, if the add operation is success, the tracker will send back the information "Add Authorized Phone OK", if the password is not right, the operation is fault, the tracker will send back information "Wrong Password" .

5.2. Delete authorized phone number by SMS

Send SMS "DELETEPHONE*123456*A" to the tracker, "DELETEPHONE" is a command; "123456" is password; "A" is authorized phone number location, there are 3 locations "A" and "B" and "C"; if the delete operation is success, the tracker will send back the information "Delete Authorized Phone OK", if the password is not right, the operation is fault, the tracker will send back information "Wrong Password".

5.3. Check authorized phone number by SMS

Send SMS "CHECKPHONE*123456" to tracker, "CHECKPHONE" is a command; "123456" is password; if the operation is success, the tracker will send back the information "Authorized Phone A: 13987654321; B: 13876543210; C: 13765432101", the phone number is just an example. if the password is not right, the operation is fault, the tracker will send back information or "Wrong Password".

6. Change / Check Password

6.1. Change tracker password

Send SMS "CHANGEPASSWORD*123456*888888" to tracker, "CHANGEPASSWORD" is a command; "123456" is old password; "888888" is new password; if the operation is success, the tracker will send the information "New Password: 888888" to every authorized phone number, if the password is not right, the operation is fault, the tracker will send back information "Wrong Password".

Note: Only authorized phone can change the password.

6.2. Check tracker password

Send SMS "CHECKPASSWORD" to the tracker, "CHECKPASSWORD" is a command, if the operation is success, the tracker will send back the information "Password: 888888"; "888888" is an example.

Note: Only authorized phone can check or change the password.

7. Set Alarming Notice by Making a Call: ON/OFF

Send SMS "CALLON*123456" (Call to authorized number) or "CALLOFF*123456" (No calling) to the tracker, "CALLON" or "CALLOFF" is a command, "123456" is the tracker password, if the operation is success, the tracker will send back the information "Alarm by calling : ON" or "Alarm by calling :OFF", if the password is not right, the operation is fault, the tracker will send back information "Wrong Password". If the alarm by calling is ON, then when the alarm is triggered, the tracker will call the authorized number to notice the alarm, the default setting is ON.

8. Set Alarming Notice by Sending SMS: ON/OFF

Send SMS "SMSON*123456" (Sending SMS to authorized number) or "SMSOFF*123456" (No SMS) to the tracker, "SMSON" or "SMSOFF" is a command, "123456" is the tracker password, if the operation is success, the tracker will send back the information "Alarm by SMS : ON" or "Alarm by SMS :OFF", if the password is not right, the operation is fault, the tracker will send back information "Wrong Password". If the alarm by SMS is ON, then when the alarm is triggered, the tracker will send SMS to the authorized number to notice the alarm.the default setting is ON.

9. Set Power Down Alarm: ON/OFF

Send SMS "POWERALARMON*123456" (Power down will trigger alarm to authorized number by calling or SMS) or "POWERALARMOFF*123456" (No Alarm) to the tracker, "POWERALARMON" or "POWERALARMOFF" is a command, "123456" is the tracker password, if the operation is success, the tracker will send back the information "Power Down Alarm: ON" or "Power Down Alarm:OFF", if the password is not right, the operation is fault, the tracker will send back information "Wrong Password". If the power down alarm is ON, then when the tracker is removed or the power is removed , the alarm is triggered, the tracker will call or send SMS to the authorized number to notice the alarm.the default setting is ON.

10. Set GPRS Mode: KEEPONLINE / SHOCKCONTROL

Send SMS "KEEPONLINE*123456" (Keep online all the time even the tracker stop moving) or "SHOCKCONTROLGPRS*123456" (Turn off GPRS after the tracker stop moving 10 minutes) to the tracker, "KEEPONLINE" or "SHOCKCONTROLGPRS" is a command, "123456" is the tracker password, if the operation is success, the tracker will send back the information "GPRS: Keep Online" or "GPRS: Shock Control", if the password is not right, the operation is fault, the tracker will send back information "Wrong Password". the default setting is Shock Control, when the tracker begin to move, the tracker begin upload the tracking, the tracker status on the platform will change to online immediately. if the tracker stop moving, the tracker will stop upload the tracking and turn off GPS & GPRS to go to sleep mode , a few minutes later the tracker status on the platform also will change to offline.

If the tracker is always online, the tracker will send tracker status to platform all the time, but this will exhaust more data charge and car battery power, and if the car will park long time or the car battery is old, this maybe cause the car battery power low and can not start car engine, we do not recommend this working mode.

11. Set GPS Mode: GPSON / SHOCKCONTROL

Send SMS "GPSON*123456" (GPS module Keep ON all the time even the tracker stop moving) or

“SHOCKCONTROLGPS*123456” (Turn off GPS after the tracker stop moving 10 minutes) to the tracker, “GPSON” or “SHOCKCONTROLGPS” is a command, “123456” is the tracker password, if the operation is success, the tracker will send back the information “GPS: Keep ON” or “GPS: Shock Control”, if the password is not right, the operation is fault, the tracker will send back information “Wrong Password”. the default setting is Shock Control, when the tracker begin to move, the tracker turn on GPS, if the tracker stop moving, the tracker will turn off GPS to save car battery power.

The GPS module keep ON can get better signal and can locate very fast, but this will exhaust more car battery power, and if the car will park long time or the car battery is old, this maybe cause the car battery power low and can not start car engine, we do not recommend this working mode.

12. Set Upload Time Interval

Send SMS “INTERVAL*123456*xxx” to tracker, “INTERVAL” is a command, “123456” is password, “xxx” is the interval time, which can be set from 30 to 999 seconds. The tracker will send back information “Set Interval xxx OK”, if the password is not right, the operation is fault, the tracker will send back information “Wrong Password”. 30 seconds is the default interval time. Longer upload interval time can save battery and GPRS data cost, but this will make the total mileage to more error.

13. Set Car Plate Name

Send SMS “PLATE*123456*PlateName” to tracker, “PLATE” is a command, “123456” is password, “PlateName” is the car plate number or name, after setting the car plate, the reply to tracker SMS will add car plate to indicate which car reply this message. The tracker will send back information “Car Plate: PlateName”, if the password is not right, the operation is fault, the tracker will send back information “Wrong Password”.

14. Check Tracker Current Setting

Send SMS “CHECK*123456” to tracker, “CHECK” is the fixed command, “123456” is password. The tracker will send back information including software version, ID S/N number, IP address, authorized phone number, GPS and GSM signal etc. if the password is not right, the operation is fault, the tracker will send back information “Wrong Password”. The following is an example :

V Mar 03 2014,TQ,CC8111312345678,www.999gps.net,58.64.155.133,8011,30,
A:13987654321, B:13876543210,C:13765432100, GPS OK,ShockControlGPS,
-95dBm,ShockControlGPRS, CMNET,User,Password,46000,e1d/24a0,93%

V Mar 03 2014, ;Software version date
TQ, ;TCP/IP Protocol name
CC8111312345678, ;ID & S/N number

www.999gps.net	;Server Domain Name
58.64.155.133,8011,	;Server IP & Port
13987654321,	;Authorized number (A/B/C)
GPS OK ,	;GPS status
ShockControlGPS,	;GPS module shock control
-95dBm,	;GSM signal strength
ShockControlGPRS,	;GPRS is controlled by shock sensor
CMNET,	;APN name
User,	;GPRS user name
Password,	;GPRS password
46000,	;Sim Card MCC+MNC
e1d/24a0,	;Current Cell ID
Battery:88%	;Battery

Note: This command usually be used to check the tracker current status & configuration, if the tracker can not work well, this command can check what the problem is.

15. Re-power on tracker

Send SMS "RESET*123456" to tracker can make the tracker power off and power on again, "RESET" is the fixed command, "123456" is password. The tracker will send back information "Cancel all alarm setting and re-power on", then the tracker will power off and power on automatically, if the password is not right, the operation is fault, the tracker will send back information "Wrong Password". some time the tracker can not work properly, send the reset command, the tracker will re-power on a few minutes later.

16. Restore to factory setting (Back to Default)

Send SMS "FACTORY*123456" to tracker can make the tracker power off and power on again, "FACTORY" is the fixed command, "123456" is password. The tracker will send back information "Setting back to factory default", then the tracker will delete all user setting, and restore all setting to factory mode, just like a new tracker, then the tracker will re-power on after delete user setting. If the user have changed the setting, such as APN, IP, authorized number, etc, you need set this again after back to factory mode. if the password is not right, the operation is fault, the tracker will send back information "Wrong Password".

17. Upgrade Software by GPRS (Air Update)

Send SMS "UPGRADE*123456*FileName*69.195.124.168*21" to tracker can upgrade the software built in the tracker, "UPGRADE" is the fixed command, "123456" is password, "FileName" is

upgrade file name, "69.195.124.168*21" is server IP and port. The tracker will send back information "Software File Name: FileName, IP:69.195.124.168,Port:21,start upgrading", please do not move the tracker so that the tracker can have better signal to download the new software, after finished downloading, the tracker will upgrade the software automatically, then re-power on the tracker and send back information "Upgrading Finish. Ver: Mar 08 2014", after upgrading all the setting will back to factory. if the password is not right, or the downloading is interrupt, the the operation is fault, the tracker will send back information "Wrong Password" or "upgrading fails for read file data via FTP error,please try later".

When the upgrade is ready, we will notice on the website, the upgrade file name & server IP and port please contact us or dealer.

Locate Operation Instruction

1. Calling trigger locating by text description location

Using authorized phone call the tracker, after ring 3 times, the tracker will hang up the call automatically and locate immediately, a few seconds later, the tracker will send back the location information with text description by SMS to the caller. If the tracker has not authorized number, any phone calling can trigger the tracker to locate immediately, if the tracker has authorized number, then only authorized phone calling can trigger the tracker to locate immediately.

The SMS information sample is as follow:



Send SMS "LOCATE*123456" to the tracker, "LOCATE" is a command, "123456" is password. If the operation is success, the tracker will send back the information as above.

If the authorized number have been set, use the authorized phone number to send SMS "123#" to the tracker also can trigger the tracker locate and reply the location with text description.

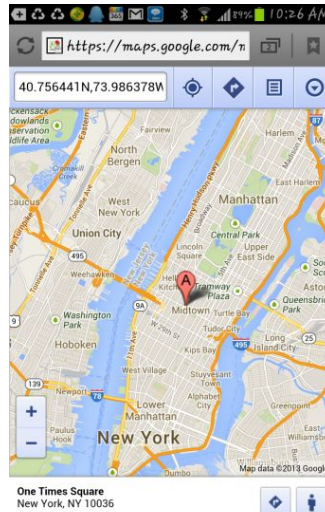
If the tracker can not get the location in text description, it will reply the location with Google map link as follow.

2. Sending SMS trigger locating by Google map link

Send SMS "URL*123456" to the tracker, "URL" is a command, "123456" is password. If the operation is success, the tracker will send back the location information with Google map link to the sender. User click the link, the location in google map will display, the SMS example is as follow:

<https://maps.google.com/maps?q=22.67680N,114.15188E>

Battery:88%



3. Cell ID Locate with Google map link

After sending SMS or calling the tracker to trigger locate, if the tracker can not receive GPS signal or GPS signal weak (underground park or indoor etc), the tracker will change to Cell ID locate, and reply a location with Google map link to the caller or sender. User click the link, the location in google map will display like above, the SMS example is as follow:

No GPS signal, Just Cell ID Location:

<http://maps.google.com/maps?q=N22.6775,E114.1518>

Note: this location is locate by GSM base station ID, the precision is not very high, in the city maybe 30-50 meters, in the country mabe over 1 km, so the location is only used for reference.

If the cell ID can not get the location either, the tracker will reply "Can not get location, please try again later".

4. Arm (Shock Alarm) by sending SMS

Send SMS "SHOCKALARMON*123456" to tracker, "SHOCKALARMON" is a command, "123456" is password, the tracker will send back the information "Set Shock Alarm ON" to indicate the operation is success and go to arm state, if the password is not right, the operation is fault, the tracker will send back information "Wrong Password".

After go to shock alarm state, the system will check shock sensor, if the shock sensor is trigger (only continuously shock can trigger the shock alarm to avoid trigger by mistake), the tracker

will send alarm and location information by SMS to the authorized phone number, and send the alarm information to the website server, also the tracker will call the authorized number A first, if no answered then B and C, if 3 authorized all no answered, then stop calling, If the tracker is triggered continually, every authorized phone will receive max 3 alarm SMS per hour.

If the authorized number have been set, use the authorized phone number to send SMS "ARM#" to the tracker also can trigger the tracker to enter arm state.

The shock alarm SMS is as follow:

Shock Alarm

<https://maps.google.com/maps?q=22.67680N,114.15188E>

Battery:88%

5. Disarm (Shock Alarm) by sending SMS

Send SMS "SHOCKALARMOFF*123456" to tracker, "SHOCKALARMOFF" is a command, "123456" is password, the tracker will send back the information "Set Shock Alarm OFF" to indicate the operation is success and disable the shock alarm, if the password is not right, the operation is fault, the tracker will send back information "Wrong Password".

After disable the shock alarm, the system will not check shock sensor again. Also send SMS "CANCELALARM*123456" to the tracker can cancel this alarm setting.

If the authorized number have been set, use the authorized phone number to send SMS "DISARM#" to the tracker also can trigger the tracker to enter arm state.

6. Set Over Speed Alarm by Sending SMS

Send SMS "OVERSPEEDALARMON*123456*xxx" (Enable over speed alarm xxx km/h) or "OVERSPEEDALARMOFF*123456" (Disable over speed alarm) to the tracker, "OVERSPEEDALARMON" or "OVERSPEEDALARMOFF" is a command, "123456" is password, "xxx is the setting speed limited", the tracker will send back the information "Set Over Speed Alarm ON" or "Set Over Speed Alarm OFF" to indicate the operation is success, if the password is not right, the operation is fault, the tracker will send back information "Wrong Password".

After enable over speed alarm, the system will check the real time speed when the car is running. If the current speed is higher than the setting speed limited, the tracker will send alarm and location information by SMS to the authorized phone number. If the tracker is triggered continually, every authorized phone will receive max 3 alarm SMS per hour. The over speed alarm SMS is as follow:

Over Speed Alarm, current speed:XXX km/h

After disable the over speed alarm, the system will not check speed again. Also send SMS "CANCELALARM*123456" to the tracker can cancel this alarm setting.

7. Check Alarm setting

Send SMS "ALARM*123456" to tracker, "ALARM" is a command, "123456" is password, the tracker will send back the information "Shock Alarm:OFF, Over Speed Alarm:OFF,Power Down Alarm:ON,Alarm calling:ON,Alarm SMS:ON" to indicate all the alarm setting, if the password is not right, the operation is fault, the tracker will send back information "Wrong Password".This command is used for check the tracker alarm setting.

8. Cancel All Alarm Setting

Send SMS "CANCELALARM*123456" to tracker, "CANCELALARM" is a command, "123456" is password, the tracker will send back the information "All Alarm setting Canceled", this command will cancel all the alarm setting include Shock Alarm / Move Alarm / Geo-fence Alarm / Over Speed Alarm, if the password is not right, the operation is fault, the tracker will send back information "Wrong Password".

9. Monitor Sound in Car

Send SMS "MONITOR*123456*13987654321" to tracker, "MONITOR" is a command, "123456" is password, "13987654321" is the number that the tracker will call back, if the operation is success, the tracker will call back immediately to the number you set(13987654321), user pick up the call and then can hear the voice in car. if the password is not right, the operation is fault, the tracker will send back information"Wrong Password".

10. Cut Oil Power (Remote Turn Off Car Engine)

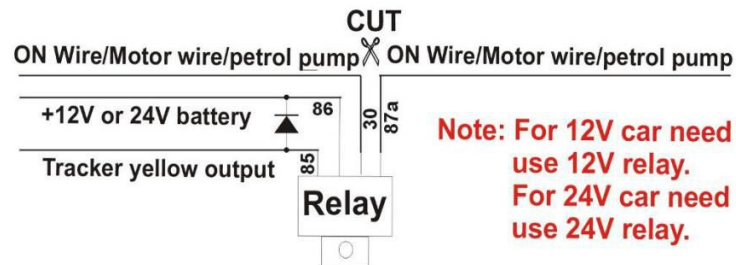
Send SMS "STOPENGINE*123456" to tracker, "STOPENGINE" is a command, "123456" is password, the car engine will be turned off immediately. The tracker will send back information "Car Engine turn off", if the password is not right, the operation is fault, the tracker will send back information "Wrong Password". "CANCELALARM*123456" or "RESET*123456" can disable the turn off car engine function.

Also logon the platform, click the "Cut oil power" menu in the left bottom windows can do the same operation, please see the operation menu of the platform.

Attention: Turning off engine is very dangerous when car is driving, this will make the car difficult to control and maybe cause a accident, so we recommend make the relay cut the start motor wire, this will make you can not remote turn off car engine, but

you can make the car engine can not be started.

The output current of the tracker is small than 500mA, so a relay is necessary to install to turn off the car engine, and also a diode is necessary to add to protect the tracker driving wire, the diagram is as follow:



11. "SOS" Emergency

Press the "SOS" button 6 seconds, first the LED will flash fast, then the LED will turn OFF, release the button, the tracker will send SOS help information to all 3 preset phone.

HELP!!!

Battery:91%

If the tracker receive the HELP information, please note that the SOS button must be pressed, please call the driver to confirm with the user is safe or not or call the police.

The SOS function need installing the external SOS button (for CCTR-800 has not external SOS button, user can press the SOS button beside the box), install the external SOS button in a hidden place that driver can press the button, connect one wire of the SOS button to GND (car body), another wire of the SOS button to tracker SOS wire.

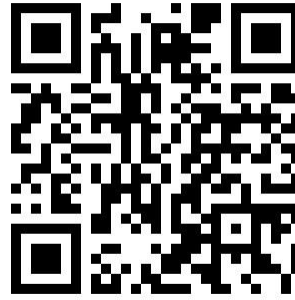


Platform Operation

The platform operation please refer the platform operation guide, scan the following QR code or click the website link to download the platform manual, visit website www.999gps.net and click the Manual icon also can download the platform manual.



[Platform User Guide Word Version](#)



[Platform User Guide Word Version](#)

Notes & Trouble Shooting:

1. Please confirm that the SIM card PIN code has been disabled, it means if mobile phone use this SIM card, it is not necessary to input any password. Otherwise the tracker can not find GSM network, the Green LED will keep ON .
2. This tracker use 2G GSM network, and it upload tracking only through 2G GPRS, it can not work in CDMA network or 3G(WCDMA or CDMA2000) network, if the 3G SIM card can use in 2G GSM network, then the SIM card can be used in this tracker.
3. The antenna of GSM and GPS is external, please note that the install location of the antenna need receive the GPS signal, normally the back of the seat or in the door post or in the roof post or under the back window or under the panel etc. please leave away the tracker from big metal, make the top of the GPS antenna face to heaven, and keep away from the magnetic components.
4. The tracker built in rechargeable backup Li battery, recharge one time can use about 1-2 days (standby mode), normally the tracker connect to the car battery all the time, this can keep the tracker has power supply continuously, and the charging circuit will stop after the battery is full.
5. The GPS need 10-200 seconds to locate the position, when the GSM signal is weak or the network is very busy, the SMS maybe delay to send by the GSM network, this is normal.
6. The tracking data on our server will keep 6-12 months, the old data will be deleted.
7. The tracker auto power off: please confirm the tracker battery have enough power, and try to recharge it; and confirm the adapter is working well .
8. After power on the tracker, the tracker GREEN LED keep on, and it has not any repose, and no ring, please confirm the SIM card has been installed properly, the SIM card PIN code is disable, and the SIM card has enough charge, and the mobile phone can work well in that

place. If the tracker work well the Green LED will flash once or third times every 4 seconds (First power on, recharging the battery will delay the first locating 5-30 minutes).

9. If the tracker can not upload location to website, please confirm the SIM card has GPRS function, and has set the APN or GPRS username & password (call the mobile phone hotline to confirm the APN and GPRS username & password, and send SMS to tracker to set these). if the tracker do not move, the tracker will not upload tracking, try moving the tracker in the open air (Indoor room can not receive GPS signal) .
10. If the tracker can not send back information by SMS, please confirm the SIM card has enough money, and has ID caller display function and SMS service function, and please read the SMS information of the tracker sending back, and check the instruction & password is right or not.
11. When call the tracker, it has ringing, but it will not hang up the calling, please check the tracker has set the preset phone number, use the preset phone or delete the preset phone number or let the tracker back to default is OK.
12. After go out the under ground park, some tracking will lost, the GSM and GPS module will take a few minutes to receive signal and re-locate, some tracking maybe lost, this is normal.

Specification:

GSM Module	SIMCOM	GPS Module	U-Blox
GSM Frequency	4 band (850/900/1800/1900MHz)	A-GPS	Available
GPS channel	24 channels	Locate precision	10-20 Meters
GPS Cold Start Time	30 seconds	GPS Hot Start Time	1-2 second
GSM Antenna	External	GPS Antenna	External
Working Voltage	9-45V DC	Battery (CCTR-811)	300mAh
Recharging Current	< 5V/100mA	Uploading Current	<200mA / 5V
Standby Current	< 10 mA	Working Temperature	-20 °C to +55 °C
Absolute Temperature	-35 °C to +70 °C	Storage Temperature	-40 °C to +80 °C

Warranty

This system has been tested before sold. We strongly recommend you to get this system installed by professional. There is a one-year warranty except the following condition:

1. Installed, fixed, or changed by personally or unprofessional.
2. Warranty will eliminate if the ownership of the tracker has been changed.
3. Parts damaged by man-made.
4. Battery, adapter, wires, etc.

Warning: this device is just a auxiliary product that applying the location of current object, we have not any responsibility if you have damage or lost in using this tracker.

Customer Name			
Customer Phone		Tracker SIM card	
Model	CCTR-808S	Serial Number	
Purchase Date		Expired Date	
Distributor			

Notes: The explanation of this manual is belonged to our company, some small changes may not notice customer, if you have any problem please contact us, thanks !