

FM1000 ST

Advanced Plug and play Tracker



ISO 9001



CERTIFIED ORGANISATION



Description

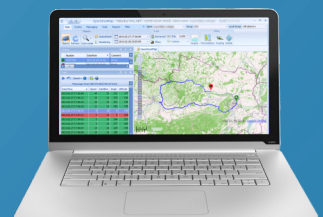
FM1000 ST is an advanced plug and track realtime tracking terminal with GPS/GLONASS and GSM connectivity, which is able to collect device coordinates and other useful data including vehicle onboard computer data to transfer them via GSM network to server. This device is perfectly suitable for applications where location acquirement of remote objects is needed: fleet management, car rental companies, taxi companies, personal cars and so on. FM1000 ST connects directly to car OBDII connector for vehicle onboard parameters reading.

Applications



FM1000 ST
Mounting Area

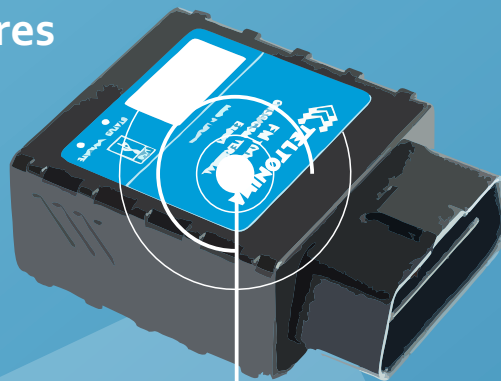
If You think, this is not enough to win ALL Your potential customers - please contact us to get advices how to use it in Your application!



FM1000 ST

TAVL

Accessories/features



* - data is available depending on vehicle's equipment, module, type and manufacture year

Features

- Plug and Track
- Small and easy to mount case – directly to car OBDII connector
- Internal GSM antenna and Internal GPS/GLONASS antenna allow mount FM1000ST much easier
- RealTime tracking
- Smart data acquisition - based on time, distance, angle, ignition and I/O events allow to have precise online tracker
- Sending acquired data via GPRS (TCP/IP and UDP/IP protocols)
- Smart algorithm of GPRS connections for GPRS traffic saving
- Operating in roaming networks by preferred GSM providers list
- Events from I/O elements detection and sending via GPRS or SMS
- Scheduled 24 coordinates SMS sending when GPRS not available
- 5 geofence zones (rectangular or circle)
 - Auto Geofencing created for car towing detection and car theft prevention
- Deep Sleep mode (less than 2 mA power consumption)
- FOTA (firmware updating via GPRS)
- 3 operational modes (Home, Roaming, Unknown) based on operator
- Integrated scenarios:
 - Over speeding to secure driver and prevent penalties
 - Trip start and end detection
 - Jamming detection
 - Excessive Idling detection
- Vehicle onboard parameters reading*

Specification

GSM

- Quad-band 900/1800 MHz; 850/1900 MHz
- GPRS class 10 (up to 85,6 kbps)
- SMS (text/data)

GPS/GLONASS

- NMEA, GGA, GGL, GSA, GSV, RMC, VTG, TXT protocol compatible
- 32 channel GPS/GLONASS receiver
- -162 dBm sensitivity

Interface

- 1 Digital Input Reserved for Ignition Status Monitoring (depends on vehicle type)
- Accelerometer
- Power supply (+10...+16) V DC
- Integrated back-up battery
- Internal High Gain GSM antenna
- Internal High Gain GPS/GLONASS antenna
- Dimensions: L(50,7mm)xW(49,6mm)xH(25mm)
- 2 Status LEDs
- USB Port
- Configuration and firmware upload (FOTA and via cable)

* - data is available depending on vehicle's equipment, module, type and manufacture year

Accessories

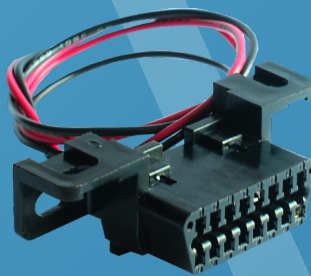
USB to mini USB cable



OBD Extension cable



FM1000 ST adapter for power connection not from OBDII connector



If You think, this is not enough to win ALL Your potential customers - please contact us to get advices how to use it in Your application!