

GH4000 Sample User Guide 1.0

About the document

This document contains information about GH4000 samples testing and configurations commonly used by the clients.

1. Getting started with GH4000 device

1.1. Client's registration information

Please fill table below (Table 1) with information needed for registration of your GH3000 on Teltonika TAVL server

Table 1

Full company's name	
Country	
GH4000 IMEI (15 digits)	
GH4000 serial number (8 digits)	
APN (depends on your GSM operator)	
APN username (depends on your GSM operator)	
APN password (depends on your GSM operator)	
GSM number (with country code)	

Fill in Table 1, send it to Teltonika Sales manager and we will create new account for You, register you GH4000, provide information about connection to Tavl

1.2. Track Assistant requirements

1.2.1. Track Assistant application can be run on computer with MS Windows XP, MS Windows Vista, MS Windows 7 or MS Windows 8.

1.2.2. It is needed to have MS .NET framework v3.5 installed on computer.

If you do not have NET framework version mentioned above, then it can be download from the link below:

<http://avl1.teltonika.lt/downloads/tavl/Framework/dotnetfx35setupSP1.zip>

If the download doesn't start automatically, click on the "Start Download" button.

1.2.3. Track Assistant application supports several types of maps:

a) Google Earth (Recommended) - for view exported data

Google Earth can be downloaded from link below:

<http://google-earth.en.softonic.com/download>

b) Integrated OSM maps.

1.3. GH4000 preparation to work

1.3.1. Insert SIM card

Use screw driver to take off GH4000 cover.

Open the GH4000 cover and insert the SIM card as shown in a figure 1.

Close the cover and screw in the screw.

SIM card is not needed then data is stored only to the memory!

Notice: SIM card can be inserted only when GH4000 battery is taken out!

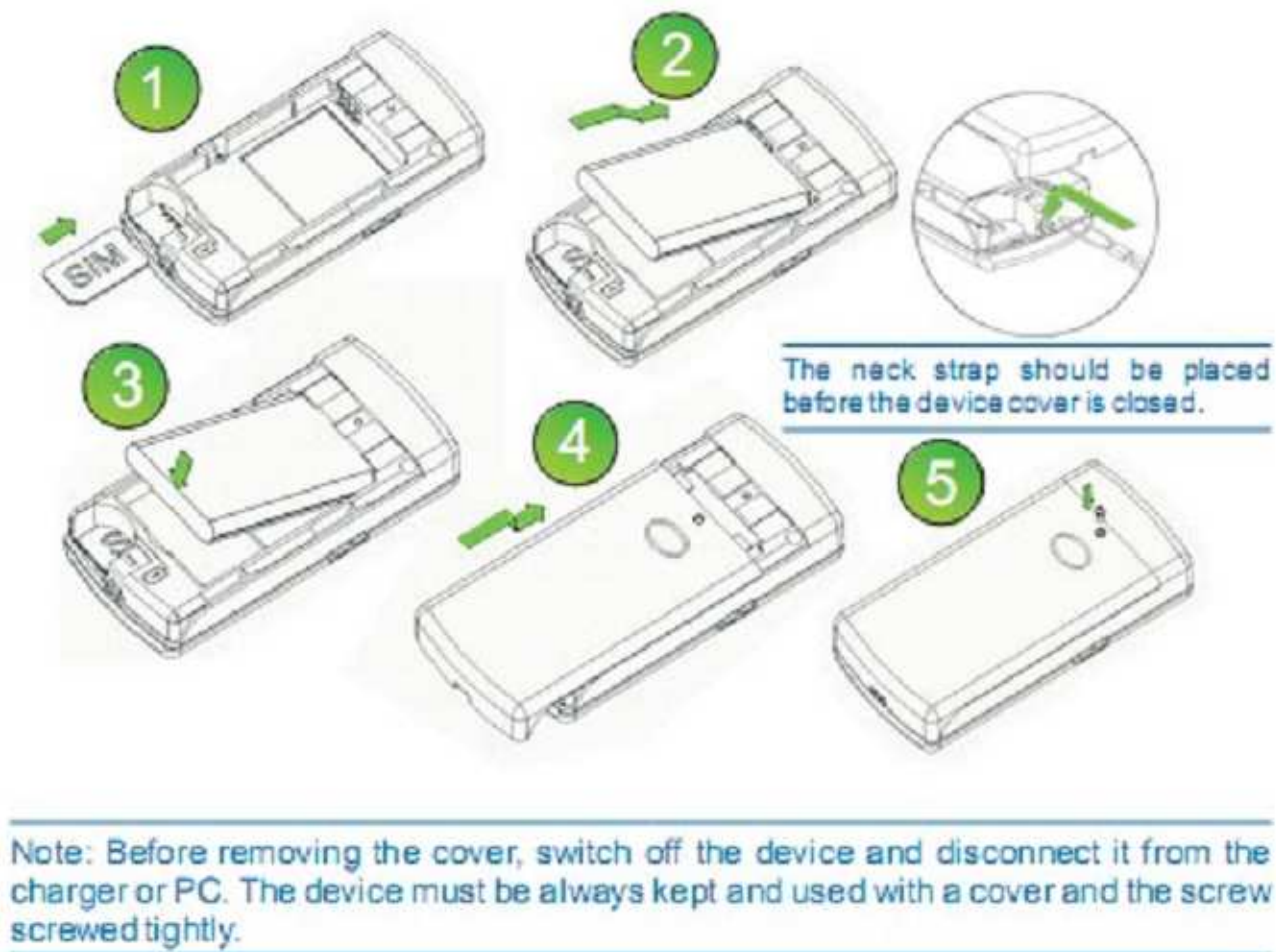


Figure 1. Inserting SIM card

1.3.2. Charge the battery

To improve GH4000 battery's charge time turn off the unit on a charge.

With turned off unit battery will charge in 4-5 hours.

Notice! It is recommended to take off the battery if the unit is not used for a long time.

1.3.3. Getting known to GH4000

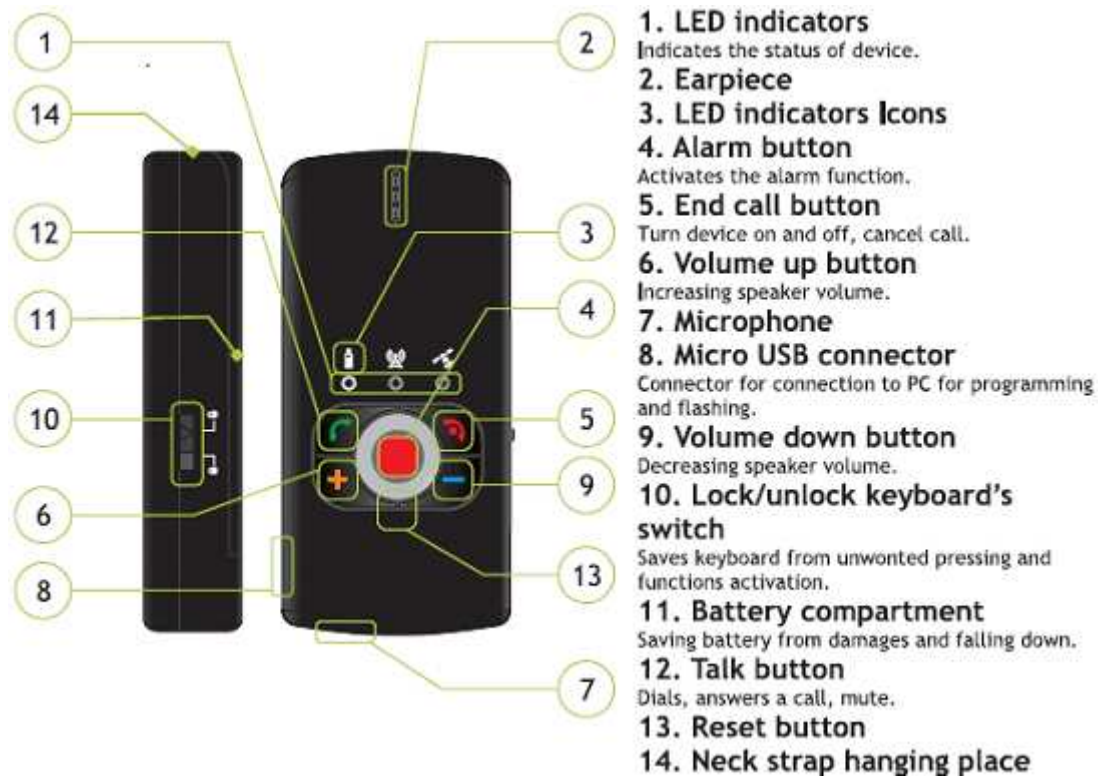


Figure 2. GH4000 functionality

To turning Device ON: Push the (5) button and wait few seconds until green battery LED turns off. After this device will vibrate for a short time period and plays the melody. If device do not turn on, check lock/unlock (10) switch, it should be unlocked or charge the device battery.

Turning Device OFF: Push the (5) button and hold until battery led (1) indicator starts light red and green simultaneously, release the button and device will switch off (it takes 5-6sec).

1.3.4. Testing environment

To get GPS position it is required to be outside.

To have more accurate GPS position it is recommended to avoid close and tall buildings which can be cause of reflection.

1.4. Track Assistant and drivers installation

1.4.1. Track Assistant installation

Track Assistant application can be downloaded from the link below:

<https://avl1.teltonika.lt/downloads/GH4000/Software/Track%20Assistant/Standard/>

Before running Track Assistant installation connect GH4000 to computer and then run software installation.

Notice: the drivers are installed during Track Assistant installation process!

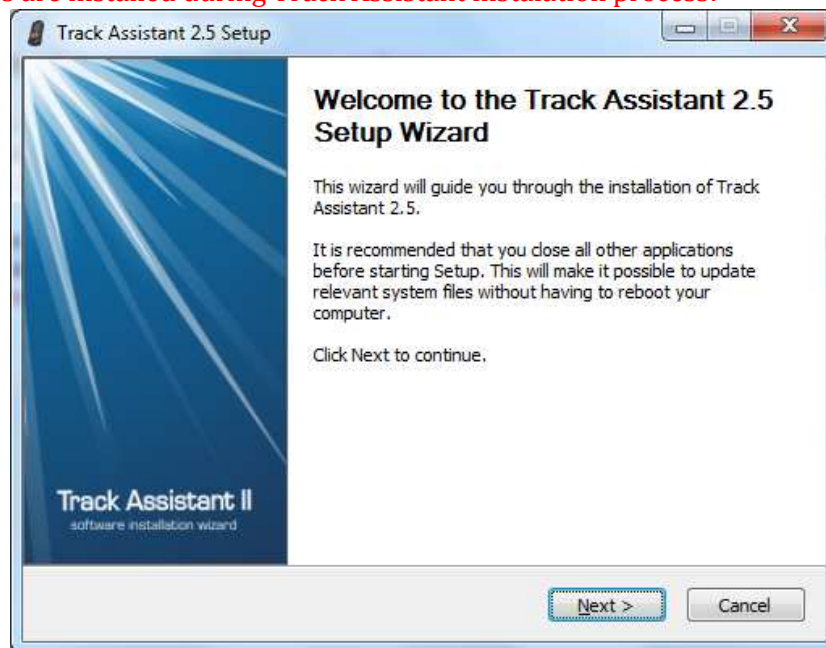


Figure 3. Track Assistant installation

1.4.2. GH4000 drivers instalation

If during Track Assistant installation on MS Windows XP and MS Windows Vista GH4000 has to be connected to computer on purpose to installer device drivers. On MS Windows 7 and MS Windows 8 GH4000 does not have to be connected during instalation process (Figure 4.)

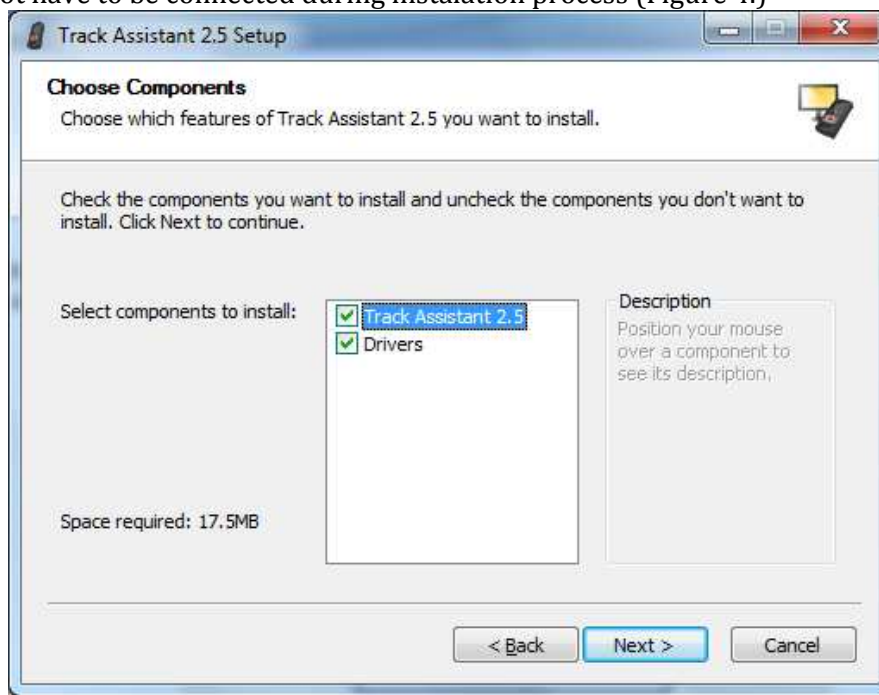


Figure 4. Drivers installation

If during Track Assistant installation on mentioned OS above GH4000 will be not connected, then you will need to reinstall Track Assistant a new.

After all click "Finish" to complete GH4000 application and drivers installation.

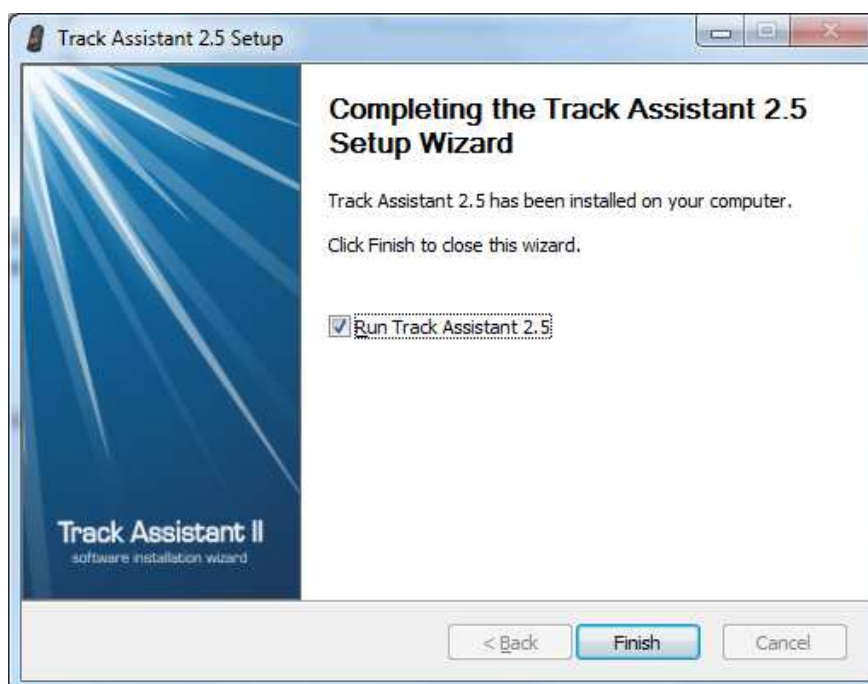


Figure 5. Drivers installation

3. Connecting and Configuring GH4000

3.1 Configuring periodical GPRS data send

To configure GH4000 for periodical GPRS data send to our server you will need to load attached GH4000 configuration file and set Access Point Name (APN) settings.

Step by step instructions:

1. Launch Track Assistant;
2. Click button „Connect GH“, password will be asked (default password „0000“)
3. After connection, click File->Load configuration...

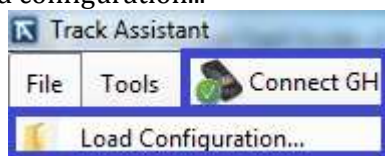


Figure 6. Connection to Track Assistant and loading prepared configurations

4. Choose file „EasyStart.afg“
5. Go in „Device Configurations“ to „Connections and Data“, click on „Create New APN“(FIG. 7.), enter APN data (APN name, username(optional), password(optional)) and choose authentication type from CHAP, PAP and NONE

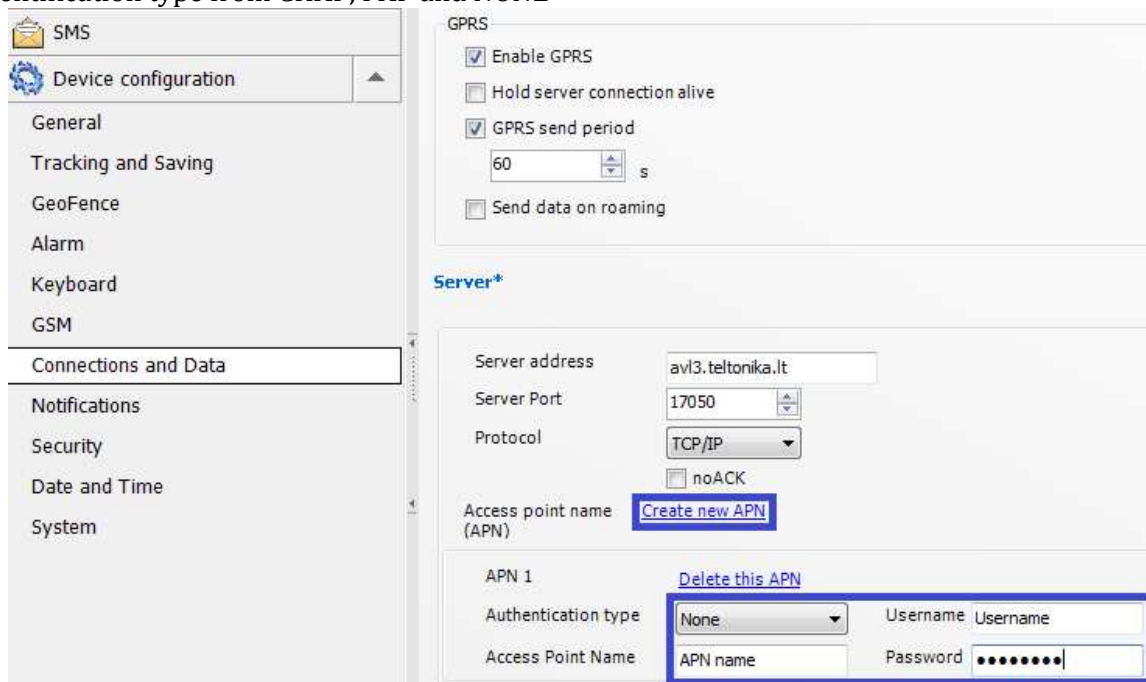


Figure 7. Connections and Data settings

6. Save all settings to GH4000 by clicking „Apply“ in right lower corner and then on a button „To Device“ (Figure 8.)

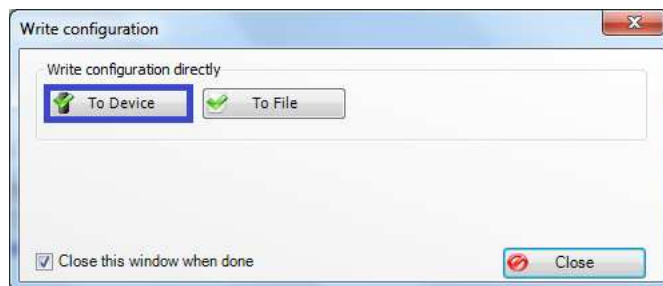
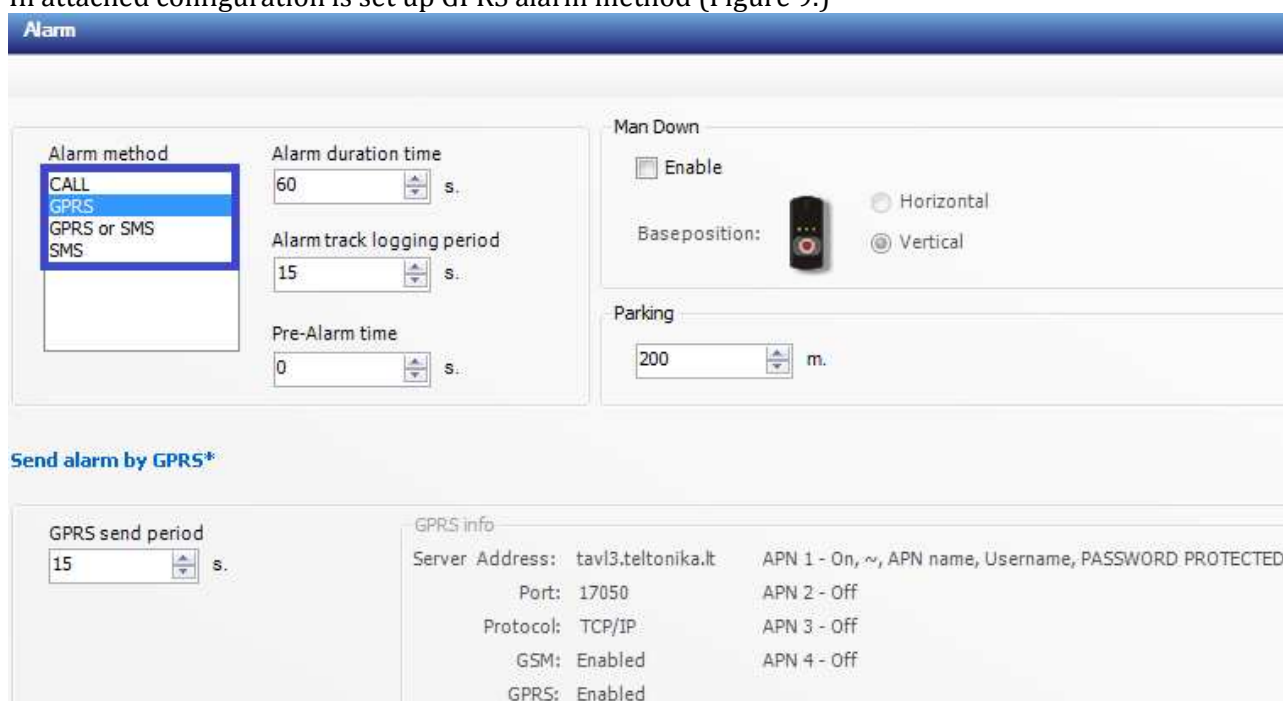


Figure 8. Writing configuration into device

3.2 Configuring Alarm data send

To Activate an Alarm event push middle red button (4) for 1sec. (Figure 4.)
In attached configuration is set up GPRS alarm method (Figure 9.)



GPRS info	
Server Address:	tav13.teltonika.lt
Port:	17050
Protocol:	TCP/IP
GSM:	Enabled
GPRS:	Enabled
APN 1 - On, ~, APN name, Username, PASSWORD PROTECTED	
APN 2 - Off	
APN 3 - Off	
APN 4 - Off	

Figure 9. Alarm settings

After configuring GH4000 disconnect it from computer and take a walk in an open sky area. From time to time check if device working.

Periodical and alarm data can be checked in TAVL application. Ask you manager for TAVL download link and TAVL logins.